

# Kidde Engineered Fire Suppression System

Designed for use with 3M™ Novec™ 1230 Fire Protection Fluid



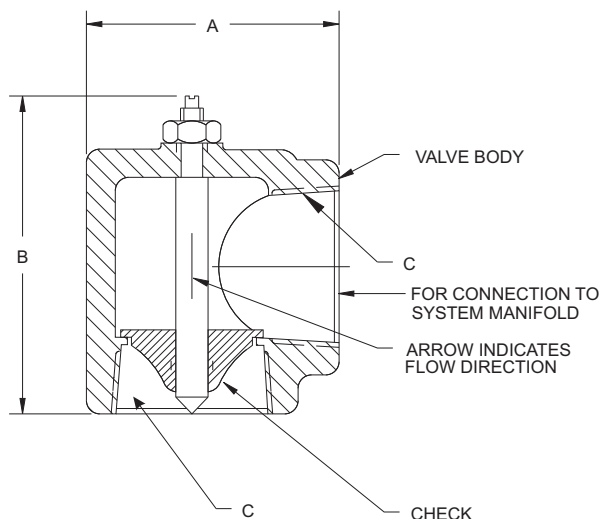
Effective: June 2015

## Manifold EI-Check

K-45-2130 Rev AC

### FEATURES

- *UL Listed, ULC Listed, and FM Approved for use with Novec 1230 Systems*
- *See Kidde Manual 06-236225-001 for USCG Approval*



### MATERIALS

- **Valve Body:** Zinc Plated Steel
- **Check:** Stainless Steel
- **Seat:** Nitrile Rubber

### ORDERING INFORMATION

P/N	Size	A*	B*	C*
WK-877690-000	2	3.93	4.88	2-11 1/2 NPT
82-878743-000	2 1/2	4.69	5.76	2 1/2-8 NPT

Note: Dimensions are in inches.

**Note:** EI-Checks are to be installed at system manifold in vertical direction, as shown.

**Do not use as a main/reserve check valve with more than one main/reserve cylinder.**

This literature is provided for informational purposes only. KIDDE-FENWAL, INC. assumes no responsibility for the product's suitability for a particular application. The product must be properly applied to work correctly. If you need more information on this product, or if you have a particular problem or question, contact KIDDE-FENWAL, Inc.