

## Electric & Machinery Fire Protection

**Raise your Fire Protection to a New Level**

# FIRETRAP

Automatic Fire Suppression Systems



Bring your  
automatic fire  
detection and  
suppression to the  
enclosure level



## In-Cabinet Fire Protection

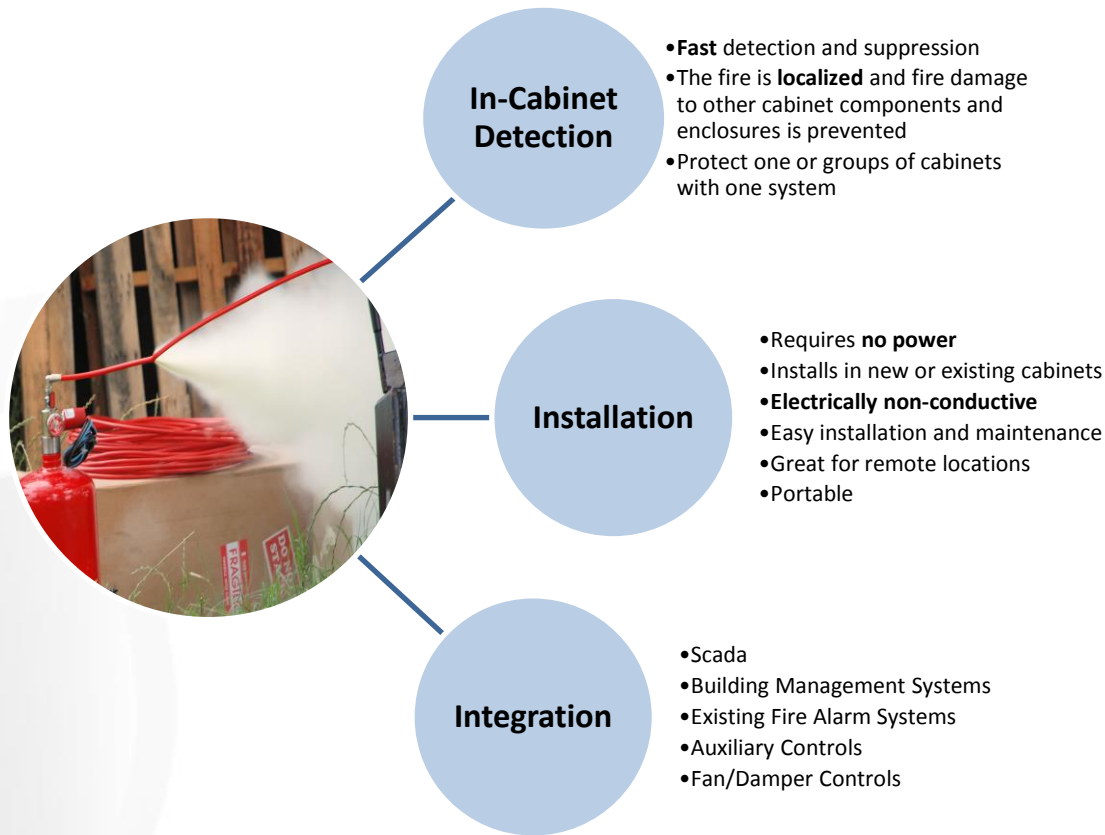


The Firetrace Detection Tubing is a linear pneumatic fire/heat detector and discharge nozzle on a Direct Low Pressure System

## Discharge Nozzle Created by Flames

# FIRETRAP

## Automatic Fire Suppression Systems



## Features and Benefits

# Raise your Level of Fire Protection



**Raise your LEVEL of Protection**

**In-Cabinet Level Fire Protection**

**Room Level Fire Protection**

**Building Level Fire Protection**





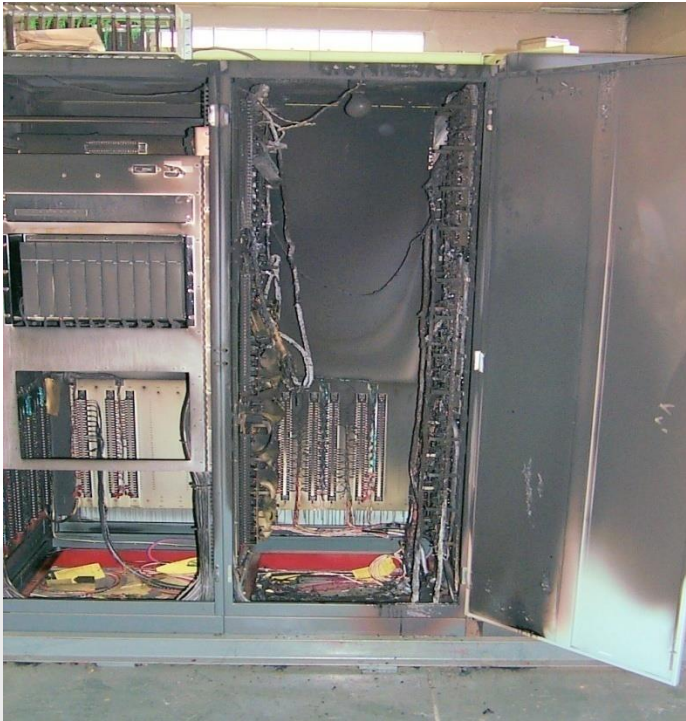


**Flexible Tubing** – allows us to provide detection and suppression almost anywhere

**Rapid Detection** - In most instances it detects and suppresses the fire in less than 10 seconds

**Cost Effective** and easy to install on new or existing cabinets or enclosures

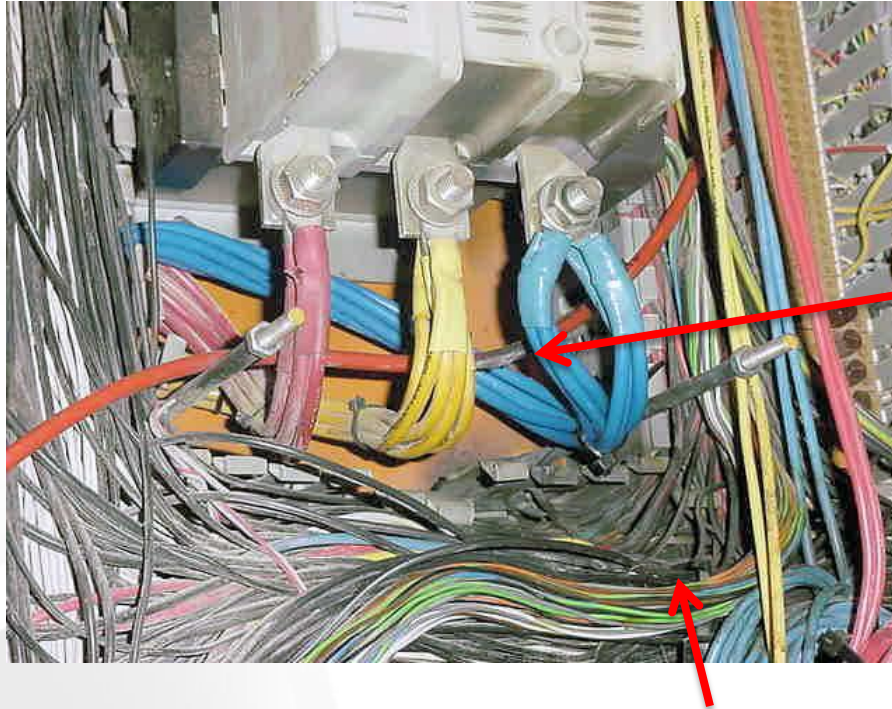
## Critical Advantage – Our Firetrace Detection Tubing!



Dramatically reduce your damage and costs to a **single** component or cabinet

## Burnt Cabinet

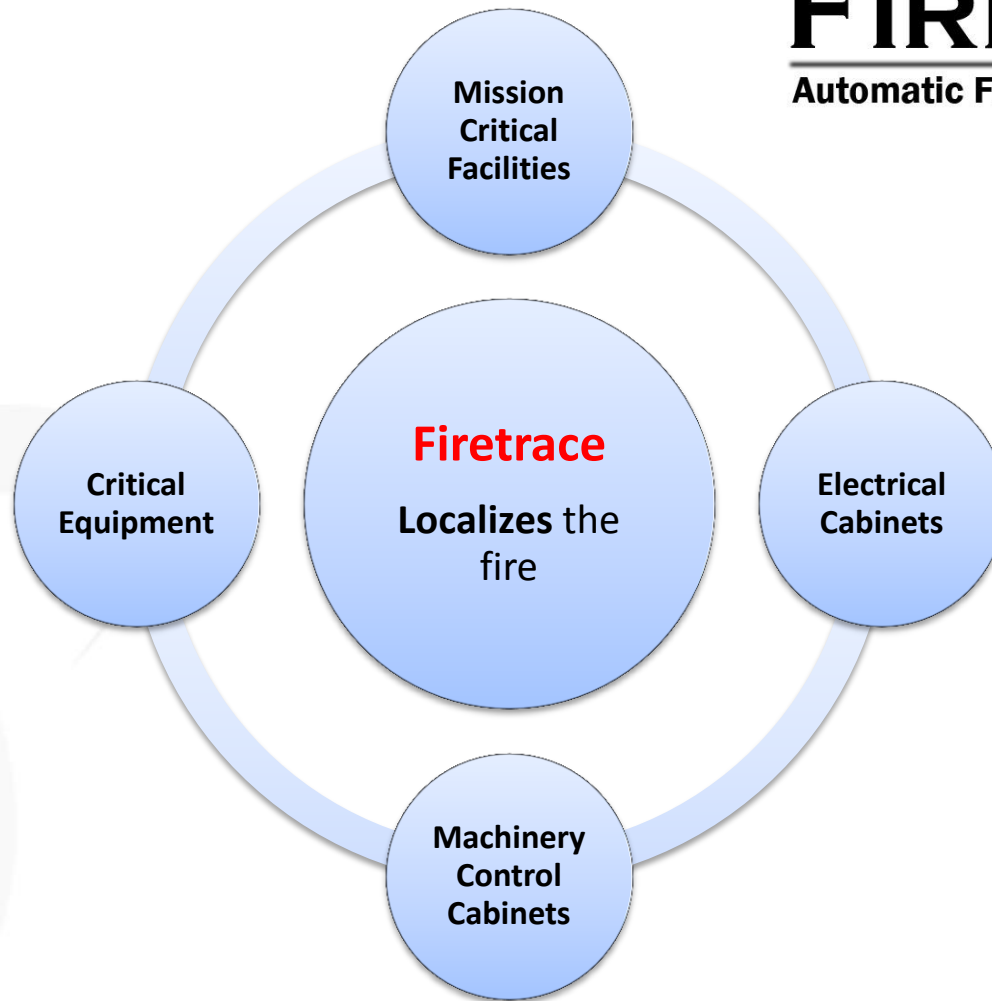




**Tube Burst Point -  
showing the suppression  
agent was delivered  
straight onto the heart of  
the fire**

**Seat of Fire in Cable Bundle  
caused by loose connection/arcing**

**Detection and Suppression at the  
ignition point**



## Applications

Protect each cabinet on  
an **individual** basis



## Electrical and Machinery Control Cabinets





Protect each cabinet on a **grouped** basis with one system

## Electrical and Machinery Control Cabinets

- **Electrical Enclosures**
- **Transformers**
- **Switchgear**
- **Generators**
- **UPS Systems**
- **Power Vaults**
- **Cable Trays**



## Electrical Applications



**Pressure Switch  
Interfaces with...**



**Fire Alarm Panels**



**Building Management Systems**

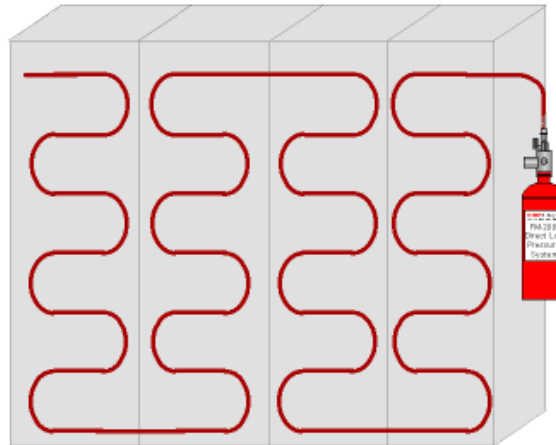


**Auxiliary Controls**



**Equipment Shut Down  
and more...**

One Firetrace system can protect multiple electrical or machinery control cabinets



## Protect Multiple Cabinets

# FIRETRAP

Automatic Fire Suppression Systems



## Protect Mission Critical Facilities

- Vehicle Machine
- Power Plants
- Data Centers
- Command and Control Centers
- Emergency Management Centers
- Research Facilities
- Portable Data Centers

## Mission Critical Facilities





## Remote Location Fire Protection



# Pre-Engineered Systems

## Risk Analysis

Identify critical equipment and processes

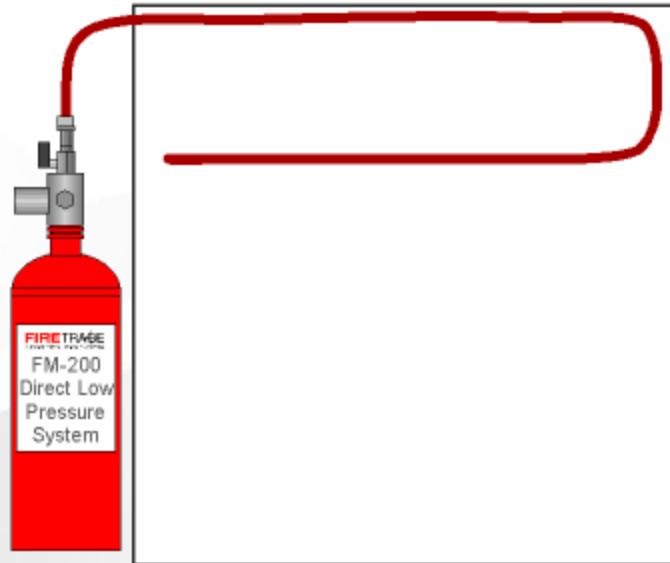
## System Design

Type of Fire (Class)  
Type of Agent  
Type of System  
(Direct or Indirect)  
Volume of Area

## Installation

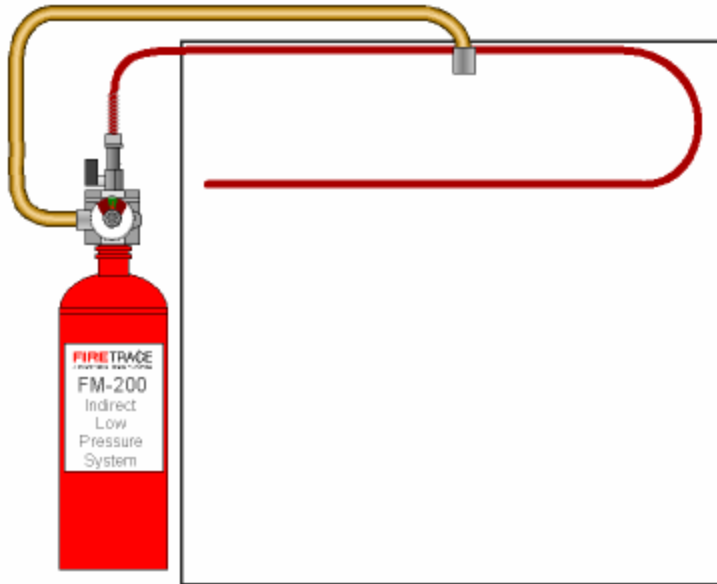
Easy Installation and Maintenance  
Installs in, on or near the enclosure

**FIRETRAP**  
Automatic Fire Suppression Systems



Tubing is both the  
fire/heat detector  
and the fire  
suppression delivery  
system, rupturing at  
212 degrees  
Fahrenheit

## Direct Low Pressure System



Firetrace tubing detects the fire and the suppressant agent discharges by separate piping

## Indirect Low Pressure System

- **Clean Agent**  
FM-200, FE-13, FE-25, FE 36, Novec 1230
- **Dry Chemical**  
ABC, BC, D (metals), D (lithium)
- **Other**  
CO2 and Foam

## Suppression Agents

- Extremely cost effective
- Supplemental to total room flooding and sprinkler systems
- No delay in the build up of an extinguishing concentration
- Additional level(s) of protection
- Ability to protect assets that were previously unprotectable!

## Micro-Environment Fire Protection



- Manual Release (Double Action)
- Pressure Switch (Cylinder and EOL)
- Solenoid Valve
- Smoke Detector
- Audible Alarm
- Time Delays
- And more...

## System Accessories



## **Electrical Fires**

**With a Firetrace Automatic Fire Detection and Suppression System...**

**This fire would already be out!**

Questions ? Need more information or assistance with a design ?



**Anwar Arifin**

PT. Global Mitra Proteksindo

**081385230013**

Email : [anwar@gmpro.id](mailto:anwar@gmpro.id)

Website : [www.pemadamapi.net](http://www.pemadamapi.net)

**Contact Information**

**FIRETRAP**  
Automatic Fire Suppression Systems



ISO / SNI ISO 9001:2008 Certified