

Latching Solenoid with Local Manual Control Head



P/N: CP 50026

Features

- High latching forces P/N:
- Fast response
- Options
 - Manual release button cap
 - Reset tool
- UL approval-recognized to UL864
- Tested in accordance with UL 508

Specification

- Manual actuation force: 12-40 lb_f (5.44-18kgf) max
- Operating force: 20.25-14.6 lb_f (90-65 N) min
- Power requirements: 24 VDC
- Current: 0.5A @ 24 VDC
- Electrical connection: DIN 43 650-A/ISO 440 3pin
- Operating temperature range: -4 to 131°F (-20 to 55°C)
- Weight: 1.9 lbs (.86 kg)
- Dimensions:
 - Body Diameter: 1.61 in (41 mm)
 - Length: 4.17 or 5.9 in (106 or 150 mm) with manual actuation cap



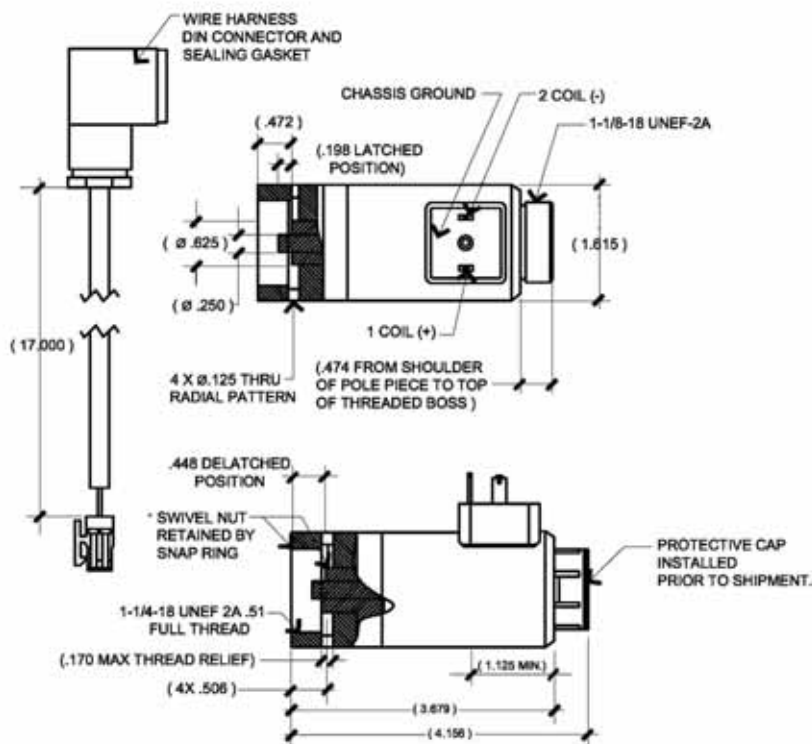
P/N: CP 61033-2

LATCHING SOLENOID

Latching Solenoid is used to open a Schrader valve on the top plug adaptor of the cylinder valve. The application provides a solution with a fast response and a high latching force to be used with the Context Plus Clean Agent Fire Suppression System.

It was determined that a latching solenoid with an optional local manual control head is the best solution for the application. The actuator is held in the latched position without power until a signal from the agent release control panel cuts off the permanent magnet. When release, the latching solenoid opens the cylinder valve allowing the extinguishing medium to discharge from the cylinder into the system. The fast response time allows the Chemori 227™ from the system to be released in the event of a fire. The latching solenoid is designed with an emergency release local manual control head to manually force the pin to depress the cylinder valve to release the extinguishing medium when needed. In order to reset the system, the solenoid is to be manually returned to the latched position.

This custom latching solenoid designed specifically for fire protection systems is UL listed and tested in accordance with UL508.



LOCAL MANUAL CONTROL HEAD

- Used for manual actuation of cylinder
- Equipped with safety pull-pin to prevent accidental manual discharge of Clean Agent
- Self-venting
- Solid brass construction
- Stainless steel operation lock-pin

The Local Manual Control Head features a local lever driven push rod that depresses a Schrader check valve thru the latching solenoid when fitted onto the top of the solenoid, thereby venting the pressure from the top of the piston in the cylinder valve, allowing the piston to slide upward and commence cylinder discharge. The Local Manual Control Head can be mounted directly to a top plug adapter, which is the top piece of the cylinder valve.



HFC-227ea Clean Agent Fire Suppression System

Context Plus Limited, 175 Mauldeth Road, Manchester M14 6SG, England, United Kingdom

Tel: +44 161 257 2541 Fax: +44 161 225 8817 Website: www.xportsales.com Email: contextplus@xportsales.com

All specifications and information indicated above are subjected to change without prior notice. Catalog # 9709/CP Ref: CP-90225-D FEB/12