

# FM-200 COMPONENT DESCRIPTION

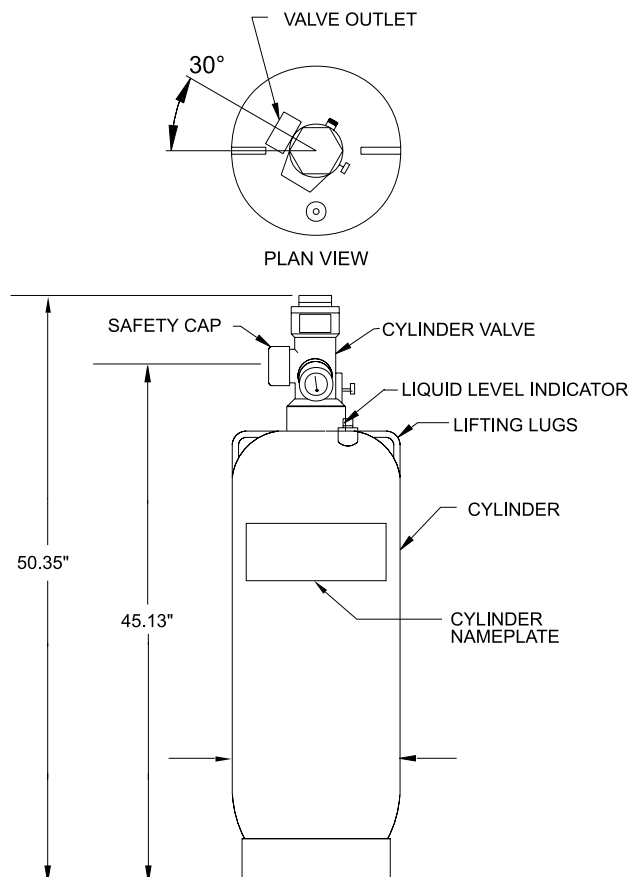
Cylinder and Valve Assembly 200 LB (90.7 KG) Capacity

# FENWAL®

F-93-2040

## FEATURES

- FOR USE WITH UL LISTED, ULC LISTED & FMRC APPROVED SYSTEMS



## NOTES:

1. THE SAFETY CAP MUST BE INSTALLED ON THE VALVE OUTLET AT ALL TIMES EXCEPT WHEN THE CYLINDERS ARE CONNECTED TO THE SYSTEM PIPING OR BEING FILLED. THE SAFETY CAP MUST NOT BE REMOVED FROM ITS CHAIN.
2. SEE F-93-2070 FOR ADDITIONAL INFORMATION.

## MATERIALS

VALVE BODY: BRASS

CYLINDER: STEEL, PAINTED RED

## ORDERING INFORMATION

P/N	DESCRIPTION
93-100200-101	STD
93-100201-101	W/LLI

P/N: 93-10020X-101

# FENWAL®

KIDDE-FENWAL, INC.  
400 MAIN STREET, ASHLAND, MA 01721  
TEL: (508) 881-2000 FAX: (508) 881-8920  
www.fenwalfire.com



This literature is provided for informational purposes only. KIDDE-FENWAL, INC. assumes no responsibility for the product's suitability for a particular application. The product must be properly applied to perform as described herein. If you need more information on this product, or if you have a question, contact KIDDE-FENWAL, INC., Ashland, MA 01721; Telephone (508) 881-2000