

FM-200 COMPONENT DESCRIPTION

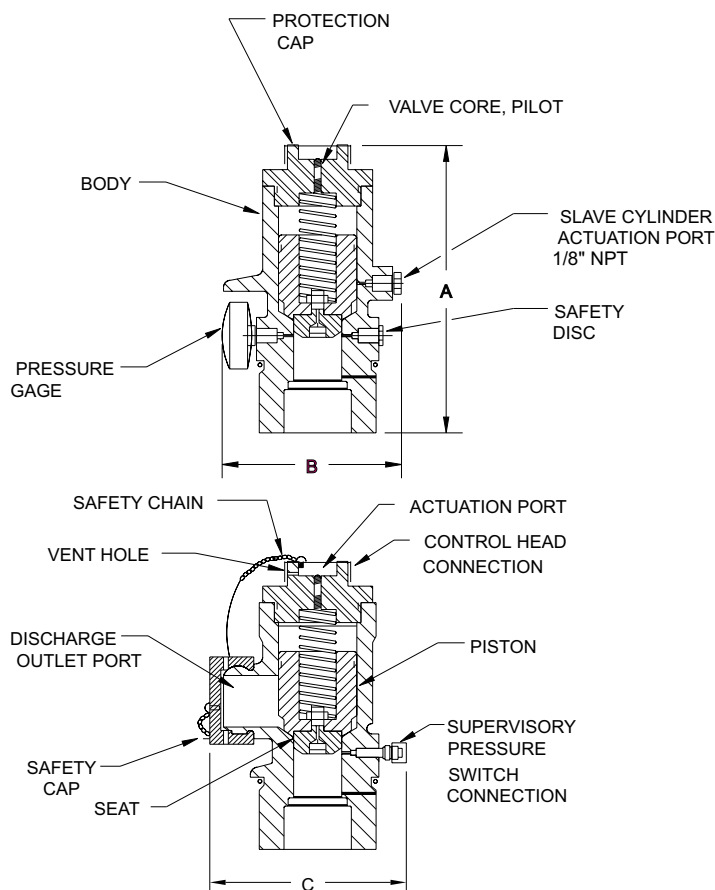
Cylinder Valve

FENWAL®

F-93-2080

FEATURES

- FOR USE WITH UL LISTED, ULC LISTED & FMRC APPROVED SYSTEMS



EQUIVALENT LENGTH OF SCHEDULE 40 PIPE:

1-1/2" : 16.7' OF 1-1/4"

2" : 28.0' OF 2"

2 1/2" : 31.5' OF 2 1/2"

WORKING PRESSURE: 360-609 PSIG

PROOF PRESSURE: 1000 PSIG

BURST PRESSURE 2000 PSIG

TEMPERATURE RANGE: 32° TO 130° F

PART NO.	VALVE SIZE	A	B	C	D	E	F
93-140000-000	1-1/2"	7.63"	4.83"	5.22"	754-900 PSI	242461	9.9 LB
93-150000-000	2"	8.80"	5.32"	6.28"	798-972 PSI	264925	15 LB
93-160000-000	2-1/2"	10.04"	6.30"	6.61"	798-972 PSI	264929	24 LB

D: SAFETY DISC RELIEF PRESSURE

E: SAFETY DISC REPL. P/N

F: WEIGHT

MATERIALS

VALVE BODY: BRASS

PISTON: BRASS

FINISH: NATURAL

SEAT: RUBBER

P/N: 93-1X0000-000

FENWAL®

KIDDE-FENWAL, INC.
400 MAIN STREET, ASHLAND, MA 01721
TEL: (508) 881-2000 FAX: (508) 881-8920
www.fenwalfire.com



This literature is provided for informational purposes only. KIDDE-FENWAL, INC. assumes no responsibility for the product's suitability for a particular application. The product must be properly applied to perform as described herein. If you need more information on this product, or if you have a question, contact KIDDE-FENWAL, INC., Ashland, MA 01721; Telephone (508) 881-2000