

# FM-200 COMPONENT DESCRIPTION

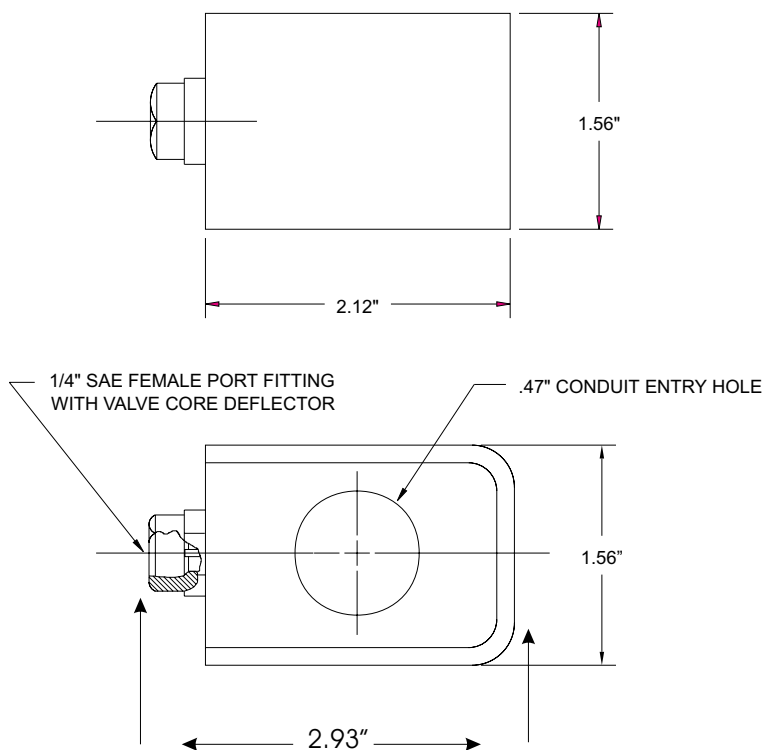
## Cylinder Supervisory Pressure Switch

# FENWAL®

F-93-2090

### FEATURES

- FOR USE WITH UL LISTED, ULC LISTED & FMRC APPROVED SYSTEMS



### ORDERING INFORMATION

OPERATION	P/N
NORMALLY CLOSED (OPEN UNDER PRESSURE)	87870900
NORMALLY OPEN (CLOSED UNDER PRESSURE)	87870901

### NEMA 1 ENCLOSURE

ACTUATION PRESSURE: 320 PSI +/- 10 PSI

DEACTUATION PRESSURE: 250 PSI +/- 10 PSI

OPERATING TEMPERATURE RANGE: +32°F TO +130°F

OPERATION EXAMPLE: "NORMALLY CLOSED" DEVICE

CONTACTS ARE OPEN UNDER PRESSURE

PRESSURE LOSS GREATER THAN 40 PSI WILL CAUSE

CONTACTS TO CLOSE

### ELECTRICAL RATING:

120/240/277 V-AC 375 VA

28V-AC/DC 2 AMPS

P/N: 8787090X

# FENWAL®

KIDDE-FENWAL, INC.  
400 MAIN STREET, ASHLAND, MA 01721  
TEL: (508) 881-2000 FAX: (508) 881-8920  
www.fenwalfire.com



This literature is provided for informational purposes only. KIDDE-FENWAL, INC. assumes no responsibility for the product's suitability for a particular application. The product must be properly applied to perform as described herein. If you need more information on this product, or if you have a question, contact KIDDE-FENWAL, INC., Ashland, MA 01721; Telephone (508) 881-2000