

FM-200 COMPONENT DESCRIPTION

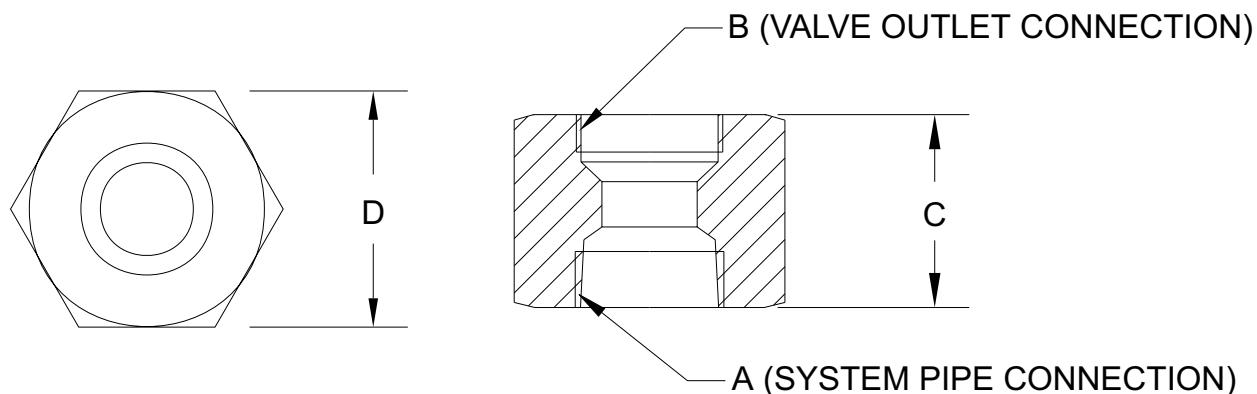
Valve Outlet Adapters

FENWAL®

F-93-2100

FEATURES

- FOR USE WITH UL LISTED, ULC LISTED & FMRC APPROVED SYSTEMS



ORDERING INFORMATION

PART NO.	SIZE	A*	B*	C*	D*
283904	1-1/2	1-1/2" NPT	1.874 12UNJ	2.69	2.50 HEX
283905	2	2" NPT	2.500 12 UNJ	3.12	3.00 HEX
283906	2-1/2	2-1/2" NPT	3.000 12 UNJ	3.00	3.75 HEX

MATERIAL: BRASS

NOTE: FOR DIRECT CONNECTION OF CYLINDER VALVE TO DISTRIBUTION PIPING.

P/N: 28390X

FENWAL®

KIDDE-FENWAL, INC.
400 MAIN STREET, ASHLAND, MA 01721
TEL: (508) 881-2000 FAX: (508) 881-8920
www.fenwalfire.com



This literature is provided for informational purposes only. KIDDE-FENWAL, INC. assumes no responsibility for the product's suitability for a particular application. The product must be properly applied to perform as described herein. If you need more information on this product, or if you have a question, contact KIDDE-FENWAL, INC., Ashland, MA 01721; Telephone (508) 881-2000