

FM-200 COMPONENT DESCRIPTION

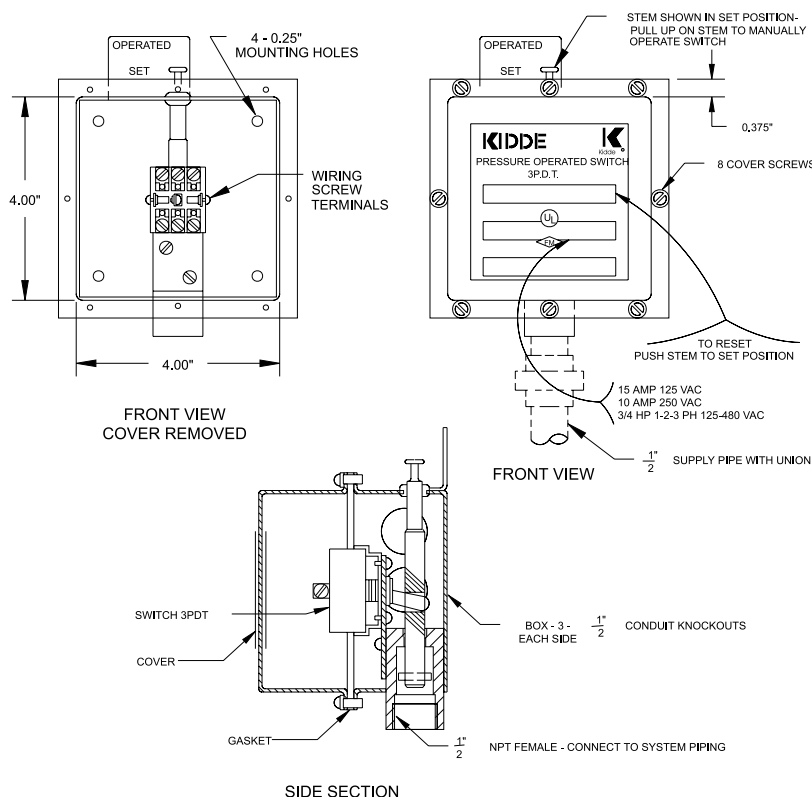
Pressure Operated Switch

FENWAL®

F-93-5180

FEATURES

- FOR USE WITH UL LISTED, ULC LISTED & FMRC APPROVED SYSTEMS



NOTES:

- SWITCH MAY BE MOUNTED IN ANY POSITION BUT PREFERRED INSTALLATION IS UPRIGHT AS SHOWN.
- ANY LOAD CONNECTION TO THE SWITCH MUST NOT EXCEED SWITCH RATING AND SHALL UTILIZE A SUITABLE PROTECTION DEVICE (ie. CIRCUIT BREAKER, FUSE)
- CONTACT RATINGS (3PDT)
 - 15 AMP @ 125 VAC
 - 10 AMP @ 250 VAC
 - 3/4 HP @ 250 VAC
 - 1, 2 OR 3 PHASE

P/N: 486536

FENWAL®

KIDDE-FENWAL, INC.
400 MAIN STREET, ASHLAND, MA 01721
TEL: (508) 881-2000 FAX: (508) 881-8920
www.fenwalfire.com



This literature is provided for informational purposes only. KIDDE-FENWAL, INC. assumes no responsibility for the product's suitability for a particular application. The product must be properly applied to perform as described herein. If you need more information on this product, or if you have a question, contact KIDDE-FENWAL, INC., Ashland, MA 01721; Telephone (508) 881-2000