

# FM-200 COMPONENT DESCRIPTION

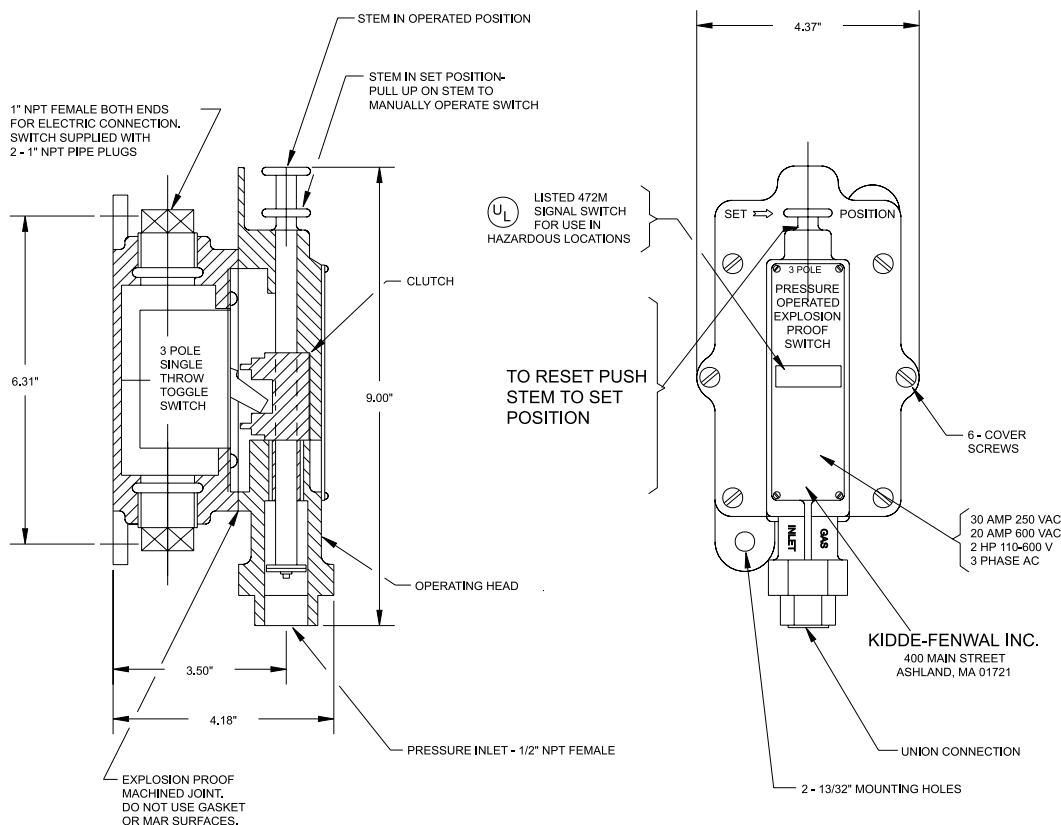
## Pressure Operated Switch, Explosion Proof

# FENWAL®

F-93-5190

### FEATURES

- FOR USE WITH UL LISTED, ULC LISTED & FMRC APPROVED SYSTEMS



### NOTES:

1. TOGGLE SWITCH MAY BE MOUNTED IN BASE FOR EITHER N.O. TO N.C. OR N.C. TO N.O. CONTACT TRANSFER UPON OPERATION. ILLUSTRATION SHOWS POSITION OF TOGGLE WHEN SWITCH IS IN SET POSITION.
2. ANY LOAD CONNECTED TO THE SWITCH MUST NOT EXCEED SWITCH RATING AND SHALL UTILIZE A SUITABLE PROTECTION DEVICE. (ie. CIRCUIT BREAKER, FUSE)

3. REMOVE OPERATING HEAD TO MAKE ELECTRICAL CONNECTIONS TO TOGGLE SWITCH. WHEN REPLACING OPERATING HEAD, ENSURE THAT TOGGLE ENGAGES CLUTCH. TIGHTEN COVER SCREWS SECURELY.
4. CLASS I, GROUP D CAUTION: TO PREVENT IGNITION OF HAZARDOUS ATMOSPHERES, DISCONNECT THE DEVICE FROM THE SUPPLY CIRCUIT BEFORE OPENING. KEEP ASSEMBLY TIGHTLY CLOSED WHEN IN OPERATION.

P/N: 981332

# FENWAL®

KIDDE-FENWAL, INC.  
400 MAIN STREET, ASHLAND, MA 01721  
TEL: (508) 881-2000 FAX: (508) 881-8920  
www.fenwalfire.com



This literature is provided for informational purposes only. KIDDE-FENWAL, INC. assumes no responsibility for the product's suitability for a particular application. The product must be properly applied to perform as described herein. If you need more information on this product, or if you have a question, contact KIDDE-FENWAL, INC., Ashland, MA 01721; Telephone (508) 881-2000