

FM-200 COMPONENT DESCRIPTION

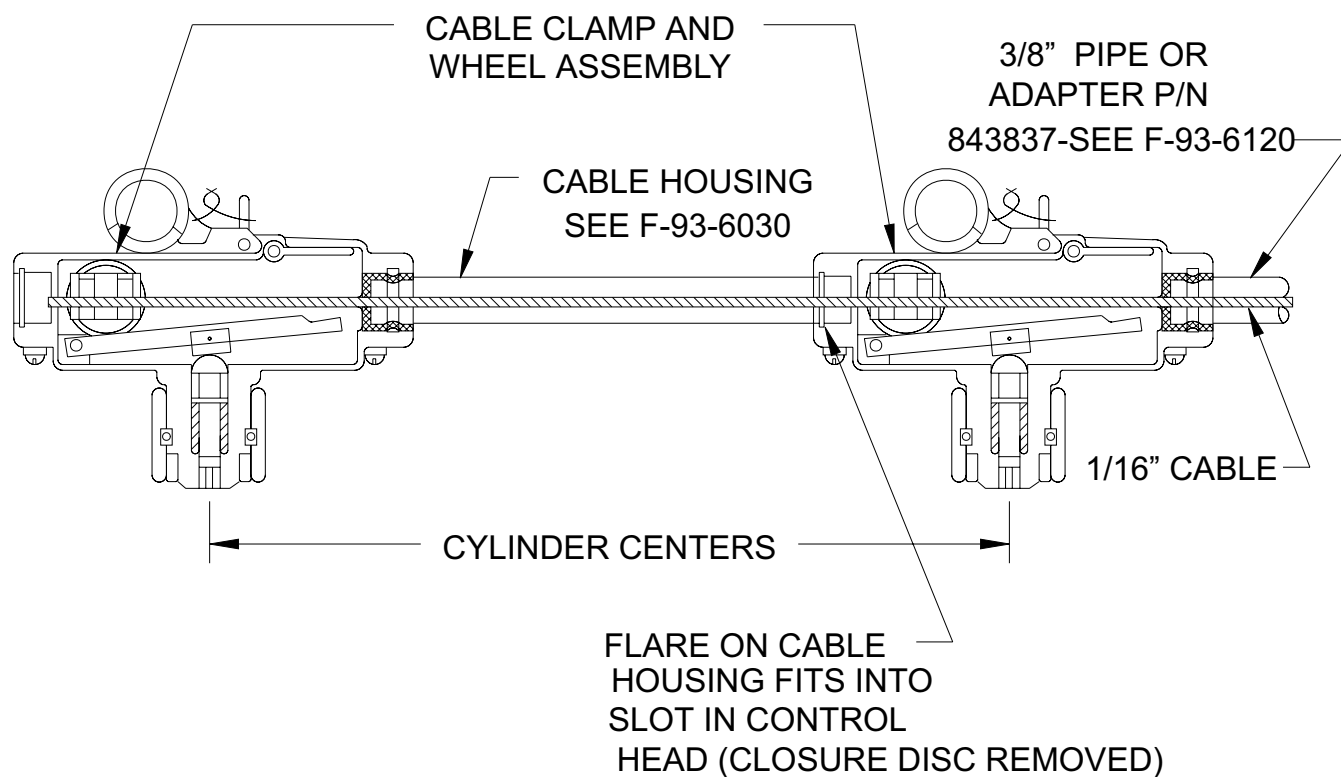
Tandem Cable Operated Control Heads - Installation Detail

F-93-6021

FENWAL®

FEATURES

- FOR USE WITH UL LISTED, ULC LISTED & FMRC APPROVED SYSTEMS


FENWAL®

KIDDE-FENWAL, INC.
400 MAIN STREET, ASHLAND, MA 01721
TEL: (508) 881-2000 FAX: (508) 881-8920
www.fenwalfire.com



This literature is provided for informational purposes only. KIDDE-FENWAL, INC. assumes no responsibility for the product's suitability for a particular application. The product must be properly applied to perform as described herein. If you need more information on this product, or if you have a question, contact KIDDE-FENWAL, INC., Ashland, MA 01721; Telephone (508) 881-2000