

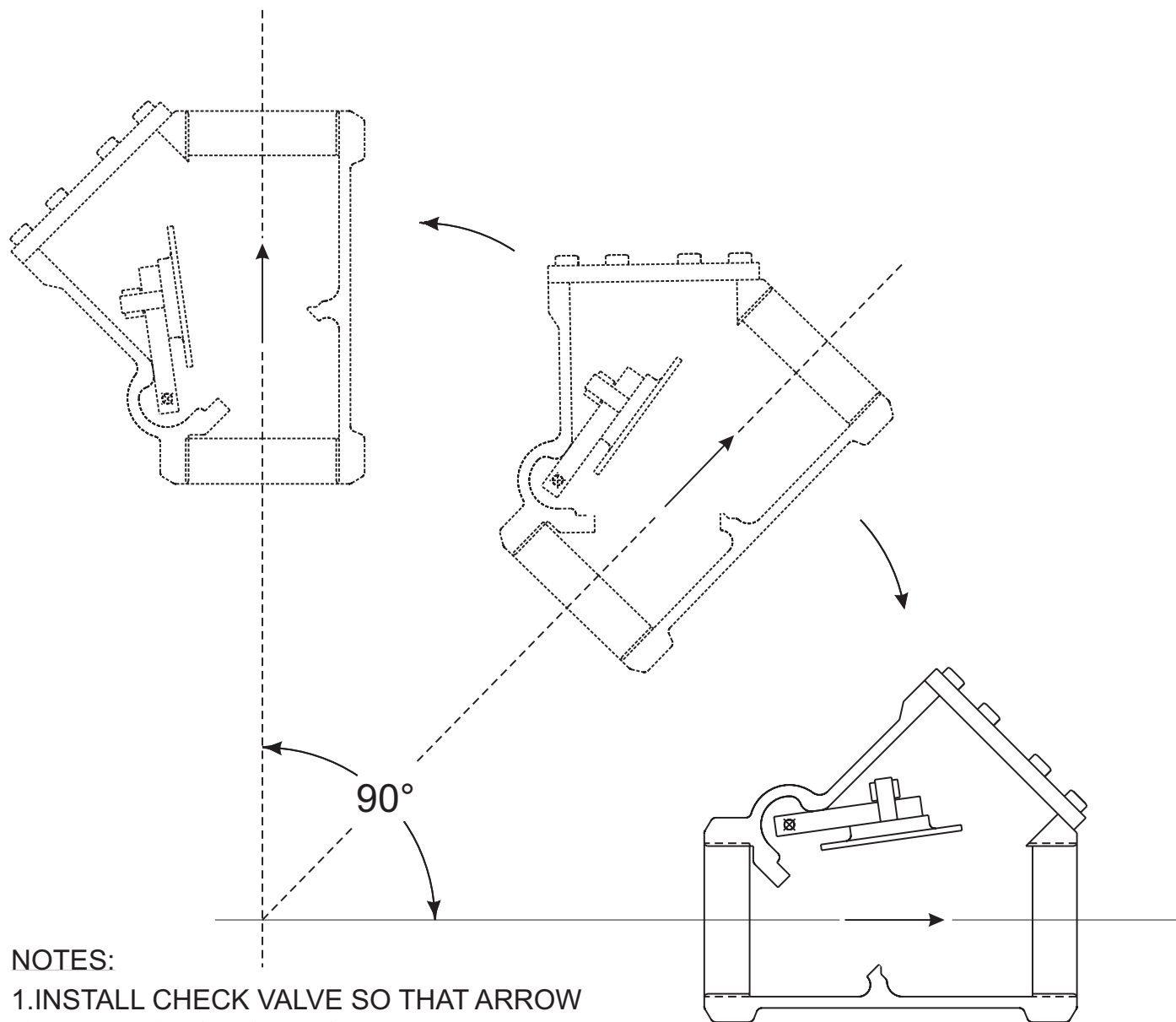
3" Swing Check Valve Installation Detail

F-93-9041

FENWAL®

FEATURES

- FOR USE WITH UL LISTED AND FMRC APPROVED SYSTEMS



NOTES:

1. INSTALL CHECK VALVE SO THAT ARROW IS IN DIRECTION OF FLOW.
2. INSTALL BETWEEN 0 AND 90 DEGREES FROM THE HORIZONTAL.

FENWAL®

KIDDE-FENWAL, INC.
400 MAIN STREET, ASHLAND, MA 01721
TEL: (508) 881-2000 FAX: (508) 881-8920

www.fenwalfire.com



This literature is provided for informational purposes only. KIDDE-FENWAL, INC. assumes no responsibility for the product's suitability for a particular application. The product must be properly applied to perform as described herein. If you need more information on this product, or if you have a question, contact KIDDE-FENWAL, INC., Ashland, MA 01721; Telephone (508) 881-2000

F-93-9041

©1999 Kidde-Fenwal, Inc.

Printed in U.S.A.