

Kidde Engineered Fire Suppression System

Designed for use with 3M™ Novec™ 1230 Fire Protection Fluid



Effective: June 2015

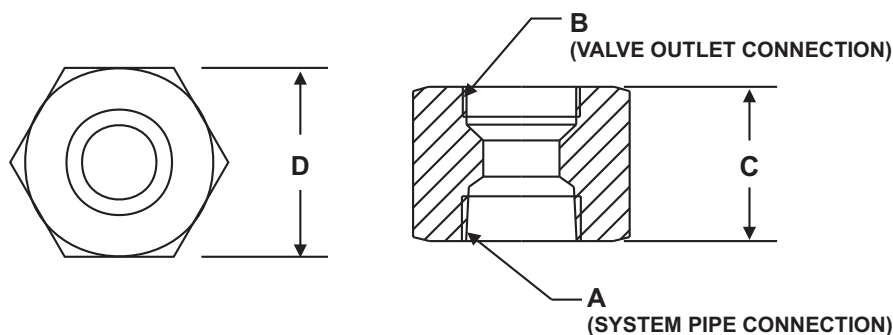
Valve Outlet Adapters Data Sheet

K-45-2100 Rev AC

FEATURES

- *UL Listed, ULC Listed, and FM Approved for use with Novec 1230 Systems*

P/N: 28390X



Note: For direct connection of cylinder valve to distribution piping.

Part Number	Size	A	B	C	D
283904	1-1/2 in. (38 mm)	1-1/2 in. (38 mm) 11-1/2 in. NPT	1-7/8 in. 12 UNJ	2-11/16 in. (68 mm)	2-1/2 in. (64 mm) Hex
238905	2 in. (51 mm)	2 in. (51 mm) 11-1/2 NPT	2-1/2 in. (64 mm) 12 UNJ	3-1/8 in. (79 mm)	3 in. (76 mm) Hex

MATERIALS

- Brass

Kidde is a registered trademark of Kidde-Fenwal, Inc.
3M and Novec are trademarks of 3M.
All other trademarks are property of their respective owners.

This literature is provided for informational purposes only. KIDDE-FENWAL, INC. assumes no responsibility for the product's suitability for a particular application. The product must be properly applied to work correctly. If you need more information on this product, or if you have a particular problem or question, contact KIDDE-FENWAL, Inc.