

Kidde Engineered Fire Suppression System

Designed for use with 3M™ Novec™ 1230 Fire Protection Fluid



Effective: June 2015

360 Degree Pendant Nozzle Data Sheet

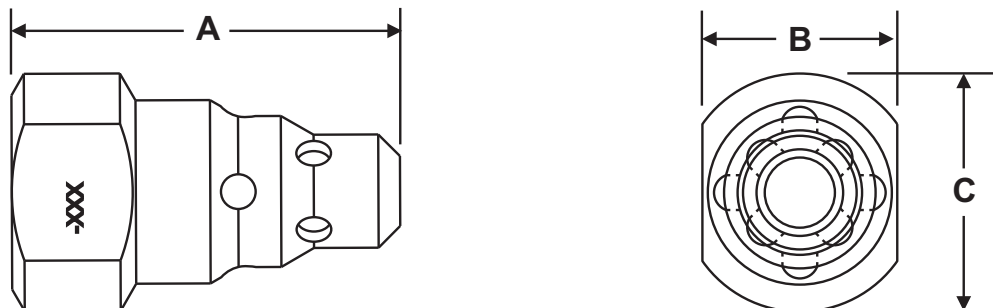
K-45-2140 Rev AE

FEATURES

- *UL Listed, ULC Listed, and FM Approved for use with Novec 1230 Systems*

P/N: 45-1946XX-XXX (Stainless Steel)

P/N: 45-1947XX-XXX (Brass)



Note: A selection of orifices are available for each nozzle size and make. Consult the Kidde Engineered Fire Suppression System Design, Installation, Operation, and Maintenance Manual for details.

Nozzle Size	Dimension		
	A	B	C
1/4 in. (6 mm)*	1.91 in. (49 mm)	1.03 in. (26 mm)	0.88 in. (22 mm)
3/8 in. (10 mm)*	2.03 in. (52 mm)	1 in. (25 mm)	1.19 in. (30 mm)
1/2 in. (13 mm)	2.25 in. (57 mm)	1.13 in. (29 mm)	1.38 in. (35 mm)
3/4 in. (19 mm)	2.69 in. (68 mm)	1.38 in. (35 mm)	1.63 in. (41 mm)
1 in. (25 mm)	2.88 in. (73 mm)	1.63 in. (41 mm)	1.94 in. (49 mm)
1-1/4 in. (32 mm)	3.29 in. (83 mm)	2 in. (51 mm)	2.38 in. (60 mm)
1-1/2 in. (38 mm)	3.63 in. (92 mm)	2.25 in. (57 mm)	2.69 in. (68 mm)
2 in. (51 mm)	4.50 in. (114 mm)	3 in. (76 mm)	3.50 in. (89 mm)

Note: * Nozzles Sizes marked with an * are not UL Listed or FM Approved.

Kidde is a registered trademark of Kidde-Fenwal, Inc.

3M and Novec are trademarks of 3M.

All other trademarks are property of their respective owners.

This literature is provided for informational purposes only. KIDDE-FENWAL, INC. assumes no responsibility for the product's suitability for a particular application. The product must be properly applied to work correctly. If you need more information on this product, or if you have a particular problem or question, contact KIDDE-FENWAL, Inc.