

Kidde Engineered Fire Suppression System

Designed for use with 3M™ Novec™ 1230 Fire Protection Fluid



Effective: June 2015

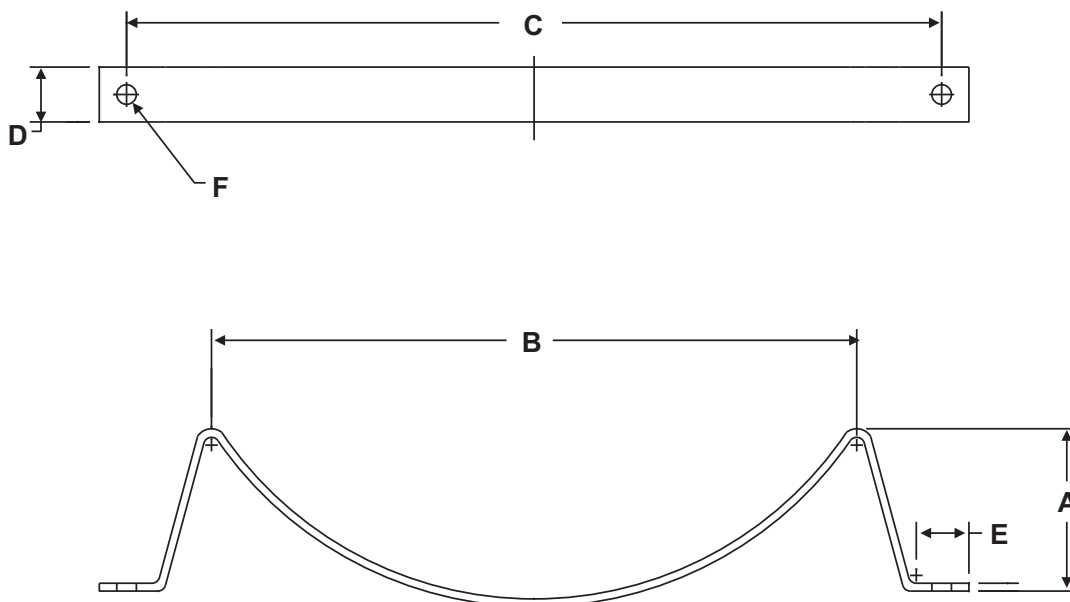
Cylinder Mounting Cradle Data Sheet

K-45-8150 Rev AC

FEATURES

- *UL Listed, ULC Listed, and FM Approved for use with Novec 1230 Systems*

P/Ns: 235431, 281867, 294652, and 06-118300-001



Part Number	Cylinder Size	Cylinder O.D.	Dimension A	Dimension B	Dimension C	Dimension D	Dimension E	Dimension F
235431	125 lb., 200 lb.	12.75 in. (324 mm)	3.20 in. (81 mm)	16.25 in. (413 mm)	15 in. (381 mm)	1.50 in. (38 mm)	1.31 in. (33 mm)	0.56 in. (14 mm)
281867	350 lb.	16 in. (406 mm)	3.58 in. (91 mm)	19.24 in. (489 mm)	18 in. (457 mm)	1.50 in. (38 mm)	1.34 in. (34 mm)	0.56 in. (14 mm)
294652	600 lb.	22 in. (559 mm)	4.75 in. (121 mm)	25.24 in. (641 mm)	24 in. (610 mm)	1.75 in. (44 mm)	1.34 in. (34 mm)	0.56 in. (14 mm)
06-118300-001	900 lb.	24 in. (610 mm)	5.18 in. (132 mm)	27.74 in. (705 mm)	26 in. (660 mm)	1.75 in. (44 mm)	1.68 in. (43 mm)	0.63 in. (16 mm)

MATERIALS

- Steel, Zinc Painted Gray AISI M1020

Kidde is a registered trademark of Kidde-Fenwal, Inc.

3M and Novec are trademarks of 3M.

All other trademarks are property of their respective owners.

This literature is provided for informational purposes only. KIDDE-FENWAL, INC. assumes no responsibility for the product's suitability for a particular application. The product must be properly applied to work correctly. If you need more information on this product, or if you have a particular problem or question, contact KIDDE-FENWAL, Inc.